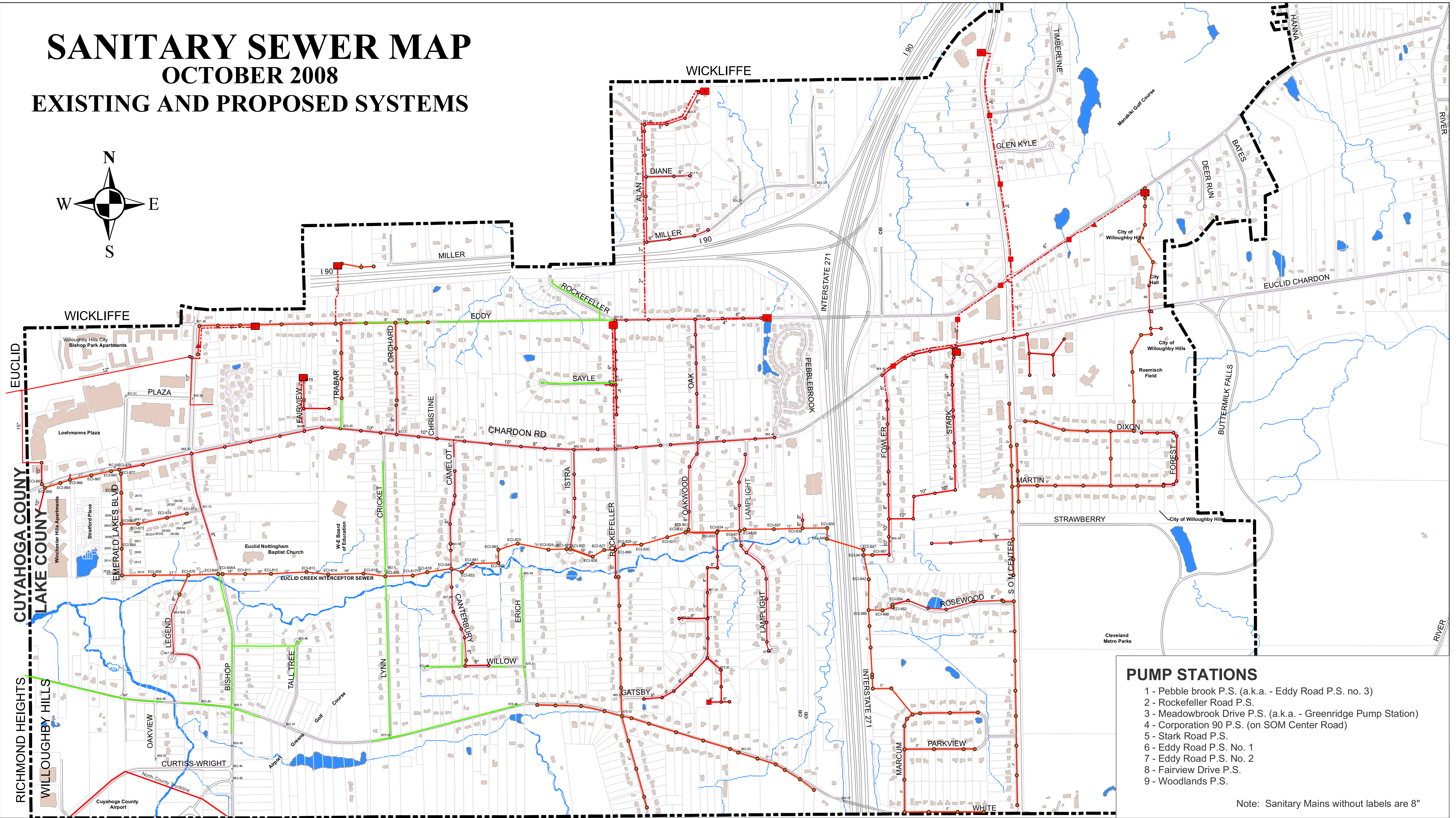
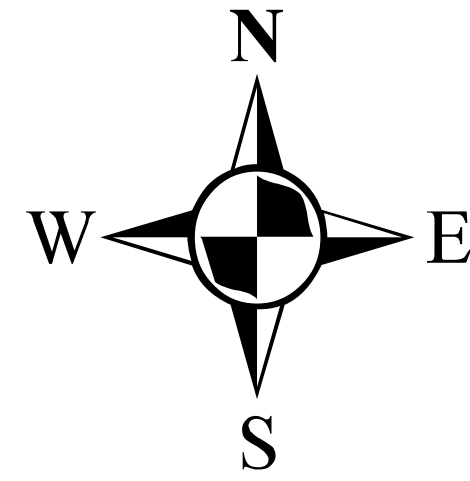


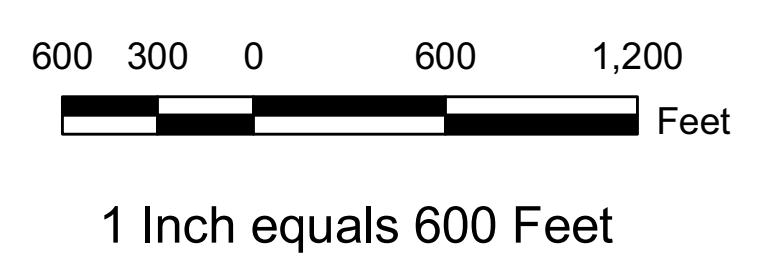
SANITARY SEWER MAP

OCTOBER 2008

EXISTING AND PROPOSED SYSTEMS



- PUMP STATIONS**
- 1 - Pebble brook P.S. (a.k.a. - Eddy Road P.S. no. 3)
 - 2 - Rockefeller Road P.S.
 - 3 - Meadowbrook Drive P.S. (a.k.a. - Greenridge Pump Station)
 - 4 - Corporation 90 P.S. (on SOM Center Road)
 - 5 - Stark Road P.S.
 - 6 - Eddy Road P.S. No. 1
 - 7 - Eddy Road P.S. No. 2
 - 8 - Fairview Drive P.S.
 - 9 - Woodlands P.S.
- Note: Sanitary Mains without labels are 8"



City of Willoughby Hills Lake County, Ohio

- LEGEND**
- Existing Sanitary Sewer
 - - - Existing Force Main Sewer
 - Existing Sanitary Manholes
 - Existing Pump Stations
 - ▲ Existing Air Release Chamber
 - Proposed Sanitary Sewer
 - NOACA Boundary

H:\BIRKEDCO_LAKE\Willoughby Hills\GIS\Map.mxd

